

Link

A flexible, modular seating system defined by clean lines and a compact footprint. Curved or straight units, with or without backrests and armrests, can be combined to fit in almost any environment.

Timber frames with CME foam padding.
Linking mechanism available.



Link



Link

Product Code	Narrow Arm LNK-01	Standard Arm LNK-02	Single Seat LNK-03	Single Seat with Back LNK-04	90° Link LNK-05	60° Link LNK-06	45° Link LNK-07
Dimensions	H615 x W100 x D665mm	H615 x W200 x D665mm	W665 x D665 x SH425mm	H780 x W665 x D665 x SH425mm	W665 x D665 x SH425mm	W665 x D565 x SH425mm	W665 x D460 x SH425mm
Product Code	Two Seat LNK-08	Two Seat Half Back Right: LNK-09a Left: LNK-09b	Two Seat Full Back LNK-10	Large Square LNK-18	Chevron LNK-19	Chevron w. Convex Back LNK-20	Chevron w. Concave Back LNK-21
Dimensions	W1330 x D665 x SH425mm	H780 x W1330 x D665 x SH425mm	H780 x W1330 x D665 x SH425mm	W1330 x D1330 x SH425mm	W1835 x D1105 x SH425mm	H780 x W1835 x D1105 x SH425mm	H780 x W1835 x D1105 x SH425mm
Product Code	Single Seat Curve LNK-11	Single Seat Curve w. Concave Back LNK-12	Single Seat Curve w. Convex Back LNK-22	Two Seat Curve LNK-13	Two Seat Curve w. Concave Half Back Right: LNK-14a Left: LNK-14b	Two Seat Curve w. Concave Full Back LNK-15	Two Seat Curve w. Convex Half Back Right: LNK-23a Left: LNK-23b
Dimensions	W920 x D705 x SH425mm	H780 x W920 x D705 x SH425mm	H780 x W920 x D705 x SH425mm	W1760 x D820 x SH425mm External Ø3025mm Internal Ø1670mm	H780 x W1760 x D820 x SH425mm External Ø3025mm Internal Ø1670mm	H780 x W1760 x D820 x SH425mm External Ø3025mm Internal Ø1670mm	H780 x W1760 x D820 x SH425mm External Ø3025mm Internal Ø1670mm
Product Code	Two Seat Curve w. Convex Full Back LNK-24	D-End LNK-16	90° Curve Concave Corner LNK-17	90° Curve Convex Corner LNK-25	Single Seat 90° Concave Curve LNK-26	Single Seat 90° Convex Curve LNK-27	
Dimensions	H780 x W1760 x D820 x SH425mm	W1330 x D765 x SH425mm	H780 x W770 x D770 x SH425mm	H780 x W665 x D665 x SH425mm	H780 x W1505 x D785 x SH425mm External Ø2145mm Internal Ø785mm	H780 x W1505 x D785 x SH425mm External Ø2145mm Internal Ø785mm	

NOTE: Illustrations show Right arm units.



FINISHES

Metal Legs



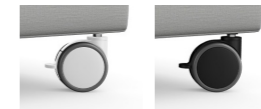
STANDARD POWDER COAT COLOURS:



PREMIUM POWDER COAT COLOURS:



On small orders a minimum charge may apply.



Castors
In White or Black, no upcharge.

NOTE: When castors are used thickness of the body is increased by 50mm

BUTTONS



Button detail available in backrests.

POWER



Optional built-in Power Modules.

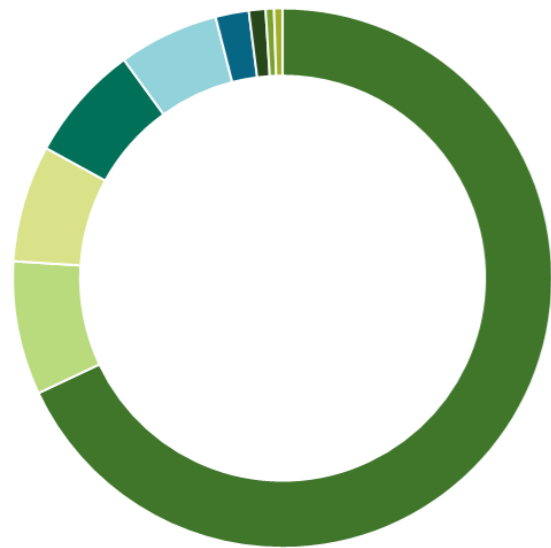
Link

PRODUCT MATERIAL BREAKDOWN

Material Breakdown Data based on Link LNK-10 upholstered in Camira Oceanic.

Figures stated will vary depending on model purchased and specification changes.

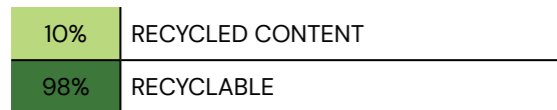
Recycled data based on supplier information and industry averages. As part of our continuous development processes we will review this information regularly and data may change without notice.



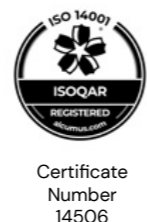
68%	PLYWOOD
8%	POLYURETHANE FOAM
7%	MILD STEEL
7%	SOFTWOOD
6%	FABRIC
2%	ZINC PLATED MILD STEEL
1%	RECYCLED FIBREBOARD
<1%	POLYPROPYLENE
<1%	LDPE

TOTAL WEIGHT: 33.5KG

SUSTAINABILITY



This product has been designed using high quality materials and craftsmanship to ensure it's longevity, however at the end of this products life it can be returned to **sixteen3** for refurbishment or recycling.



Warranty Information

5 YEAR - NORMAL FAIR WEAR & TEAR

This includes the structure and any foam/padding materials. Fabrics are covered by fabric manufacturers' warranties, usually 5 years, dependant on fabric choice.

Please refer to full **sixteen3** Warranty information document for more details. **sixteen3** Ltd reserve the right to update product data information without prior notice.

Standards

FLAMABILITY

The foams & fillings of this product meet BS EN 5852: Part 2, in accordance with The Furniture and Furnishings (Fire) (Safety) Regulations 1988.

CONSTRUCTION

Designed to meet & exceed BS EN 16139: 2013 - Strength, Durability and Safety Requirements for non-domestic seating.

SURFACES

Laminate surfaces tested to EN 438-2 for scratch resistance in horizontal surfaces. Powdercoated MDF surfaces certified to FIRA 6250. The powder conforms to the industries severest testing, and passes all performance requirements for resistance to impact, dry and wet heat, as well as resistance to cold liquids, oils and fats.

Cleaning & Maintenance

GENERAL MAINTENANCE

- Vacuum upholstery regularly to remove dust and grit.
- Most hard surfaces can be cleaned with a soft cloth, dampened with a small amount of water and buffed dry.
- Clean spills and stains quickly to prevent them setting in (see specific fabric care instructions below).
- If being used in a spill/stain prone area specify an appropriate finish with stain-repellent properties.

Refer to fabric manufacturers own guidelines for specific information.

NATURAL FABRICS

In addition to regular vacuuming, wool and other natura fibres can usually be cleaned using appropriate upholstery shampoo. For a deeper clean it is best that wool be dry cleaned, as over-wetting can cause shrinkage and appearance change. Never apply bleach, ammonia, alkali or strong acids to wool upholstery.

SYNTHETIC FABRICS

Vacuuming is the best regular maintenance followed by speed of action to remove spills and stains rapidly as soon as they occur. Most synthetic fabrics can be wiped down with a water soaked damp cloth without fear of damaging fibre or removing colour. Stubborn stains can be removed with a quality upholstery shampoo.

LEATHER

Leather should be regularly dusted with a soft cloth and vacuumed with a soft brush extension. Most types of aniline can also be treated with specialist products to help preserve colour/finish etc. As leather is a natural material, discrepancies in surface texture and 'puddling' in seat areas is to be expected.

WOOD FINISHES

Clean surfaces regularly with a slightly damp cloth and buff dry with a soft duster. The finish on all wood and laminate surfaces is designed to withstand moderate heat and some spillages, but all spillages should be wiped off with a damp cloth straight away. Do not drag any objects across any table tops. Certain wood finishes will naturally change in appearance with age. We cannot guarantee an exact match of any timber products.

POWDER COATED METAL

Clean surfaces regularly with a slightly damp cloth and a mild solution of soapy water. Buff dry with a soft duster.



CONTACT

0845 078 0324

sales@quillsinteriors.co.uk

Quillsinteriors.co.uk